

# WORK HOLDING EQUIPMENTS

CATALOUGE



Manufactured By

**STANDARD VICES**

**AN ISO 9001: 2015 CO.**

Website: [www.harcovices.com](http://www.harcovices.com)      Email: [info@harcovices.com](mailto:info@harcovices.com)

## ABOUT US

Standard Vices came into existence In the year 2020 employing with qualified team of mechanical engineers having vast experience in manufacturing of vices which are available under brand name HARCO .

All parts are being manufactured on cnc machines.

Quality is maintained with cnc hydraulic surface grinding machines.

HARCO product are made of selected raw material.

Due to research and development program, The Design and particulars of all products given in this Catalogue are subjected to change without prior Notice to anybody.



Manufactured By

**STANDARD VICES**

Industrial Area, Faizpura Road, Landmark- Sadar Police Station, Batala

District Gurdaspur 143505 (Punjab) India

Mobile No. 7009699981, 9465474370

Website: [www.harcovices.com](http://www.harcovices.com)

Email: [info@harcovices.com](mailto:info@harcovices.com)

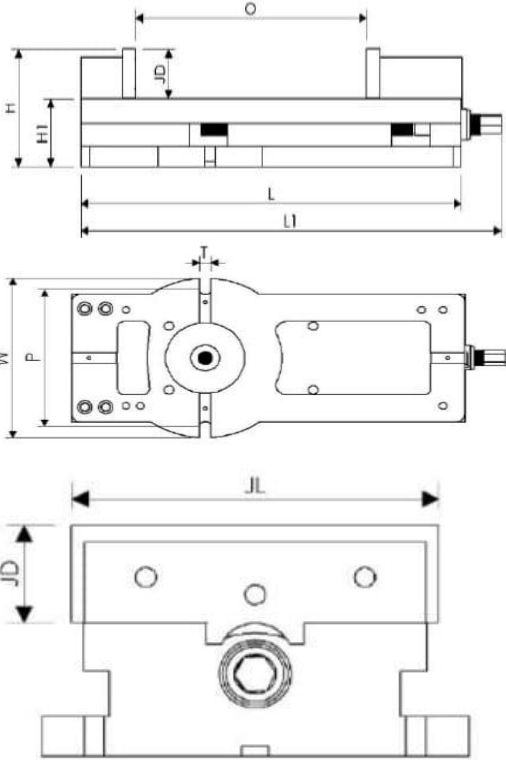


# LOCK DOWN JAW MACHINE VICE CODE NO H- 405



## KEY FEATURES

- ❖ Specially designed for Milling Machine & CNC Machining centre
- ❖ Body made of high quality ductile cast iron to resist deflection or bending.
- ❖ Accuracy in squareness is 0.02/100mm.
- ❖ Quick for clamping and easy operation.
- ❖ All parts interchangeable & available as spare.
- ❖ Hardened & ground slideways.
- ❖ Available with swivel base also.



Can be mounted through the body

## Dimensions in mm

Model Number	L	W	H1	H	O	L1	JL	JD	P	T	Weight	Clamping Pressure
5130	340	165	80	128	<b>130</b>	395	135	48	127	16	22 Kgs	1500 Kg
6200	405	190	80	128	<b>200</b>	460	165	48	190	16	28 Kgs	3000 Kg
6250	450	190	80	128	<b>250</b>	505	165	48	190	16	33 Kgs	3000 Kg
8275	490	250	82	142	<b>275</b>	545	215	60	215	16	55 Kgs	3500 Kg
8330	540	250	82	142	<b>330</b>	600	215	60	215	16	58 Kgs	3500 Kg

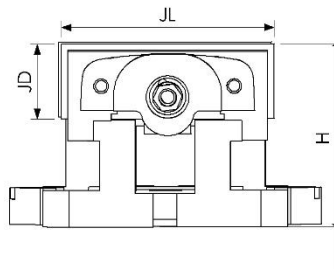
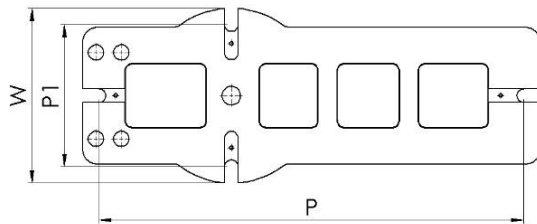
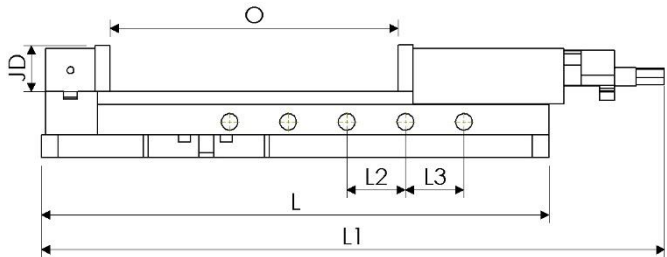


# HIGH PRESSURE HYDRAULIC MACHINE VICE CODE NO H- 415



## KEY FEATURES

- ❖ Strongly constructed for CNC milling machine, drilling, shaping, and many other machine shop applications.
- ❖ Body made of high quality ductile cast iron to resist deflection or bending.
- ❖ Hardened and ground slideways.
- ❖ Concealed spindle for protection against chip and dirt.
- ❖ Hydraulic booster system for maximum clamping pressure with minimum force.
- ❖ Hydra booster system is guaranteed for one year.
- ❖ Accuracy in squareness is 0.02/100mm.
- ❖ Quick for clamping, locking and easy operation.
- ❖ The hydraulic oil number is # 68.
- ❖ Maximum clamping pressure is 4500 kg.



## Dimensions in mm

Model Number	L	W	H	O	L1	L2	JL	JD	P	P1	T	Weight	Clamping Pressure
HMV-350	610	235	136	<b>350</b>	780	72	160	56	570	190	18	52 Kgs	4500 Kg
HMV-210	470	235	136	<b>210</b>	610	72	160	56	570	190	18	38 Kgs	4500 Kg

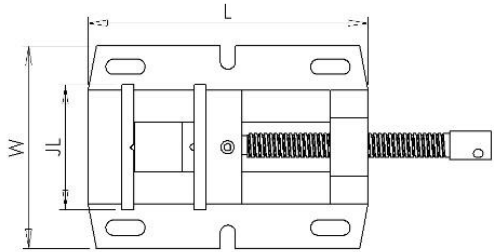


# DRILL MACHINE VICE HEAVY DUTY CODE NO H-425

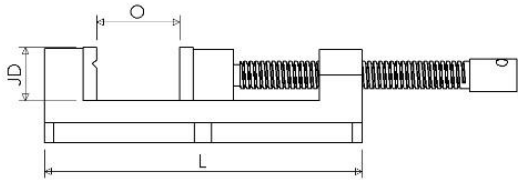


## KEY FEATURES

- ❖ Body made of high quality alloys steel.
- ❖ Designed for powerfull clamping for drilling, tapping and reaming.
- ❖ Fine square thread lead screw.



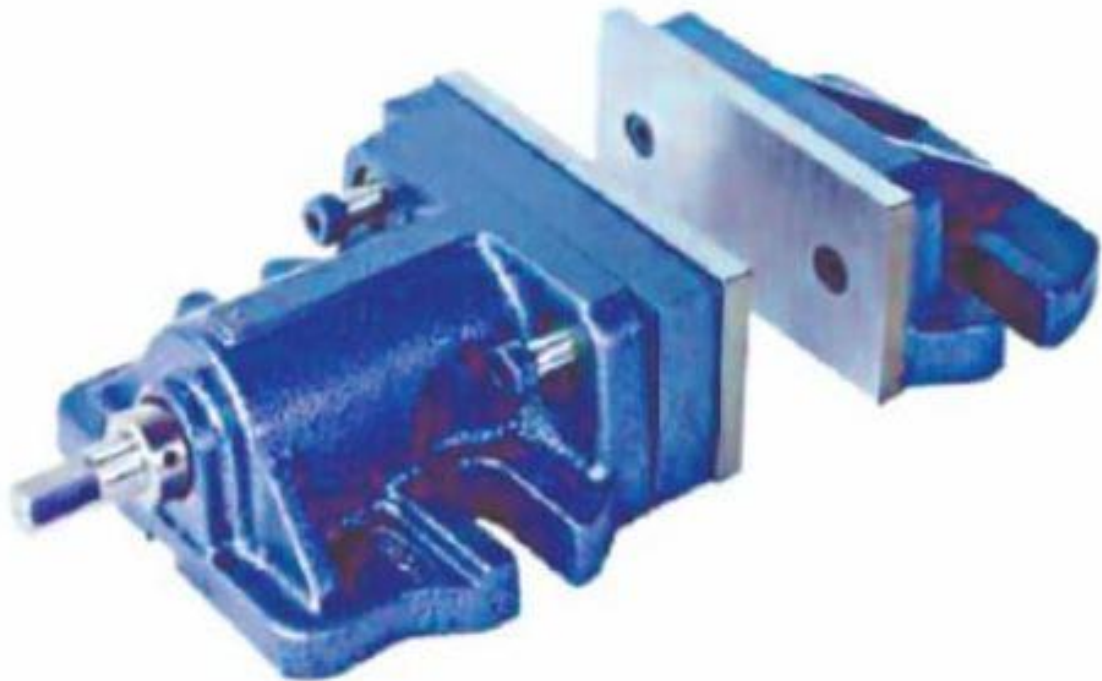
## Dimensions in mm



Model Number	L	W	JD	O	JL	Weight in Kg
DV 4130	235	170	40	130	105	7
DV 6180	310	220	50	180	165	14

Ideal For :

Milling Machines



Dimensions in mm

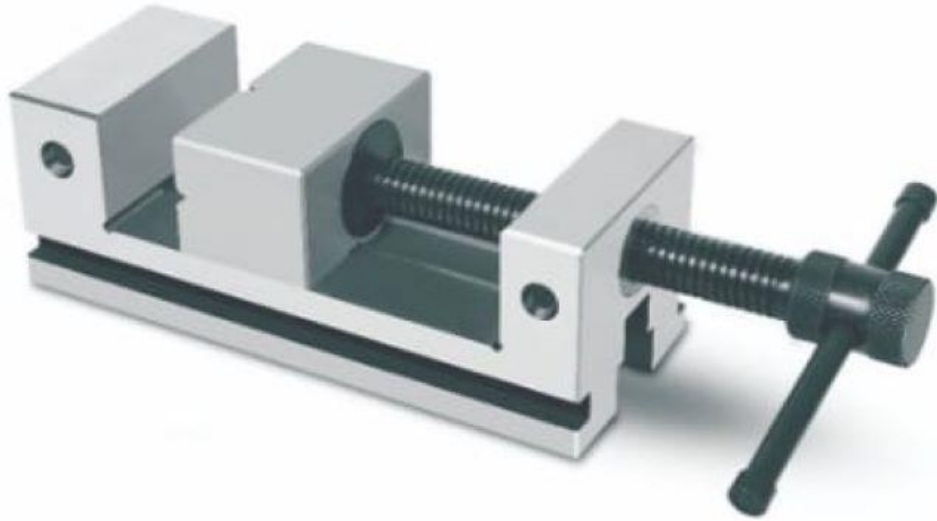
Model Number	Jaw Width	Opening
HAMMV-6150	1 50	Limitless
HAMMV-8200	200	Limitless

Accuracy in Parallelisms of Jaw 0.02/100mm

Closed Grain Cast Iron Body



Ideal For :  
Grinding Machines



**Dimensions in mm**

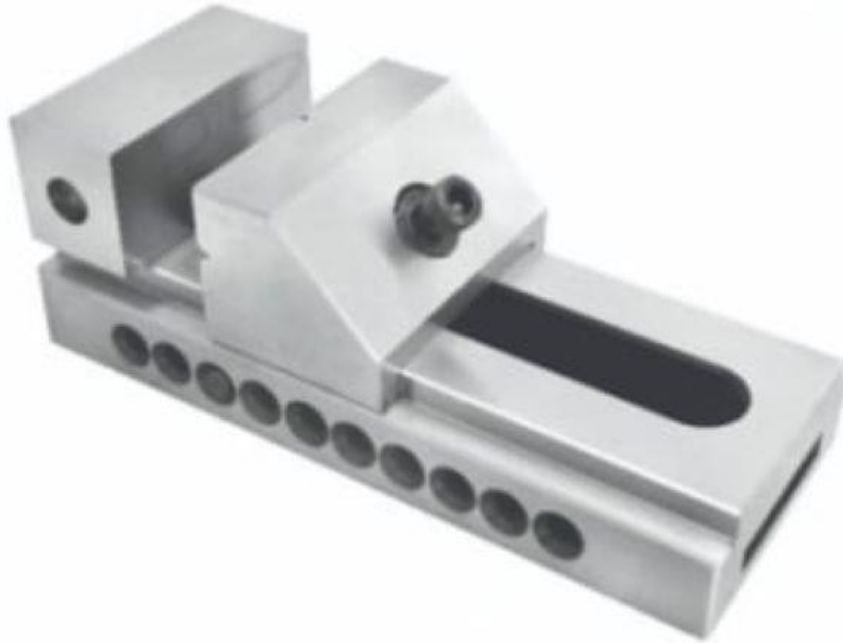
Model Number	Jaw Width	Opening
HTMV-60	60mm	60mm
HTMV-75	75mm	80mm
HTMV-100	100mm	105mm
HTMV-125	125mm	150mm
HTMV-150	150mm	150mm

Accuracy in Parallelisms is 0.01/100mm

All Steel Hardened & Ground

Ideal For :

Grinding Machines



**Dimensions in mm**

Model Number	Jaw Width	Opening
HTMVP-50	55mm	80mm
HTMVP-75	75mm	100mm
HTMVP-100	100mm	125mm
HTMVP-125	125mm	150mm
HTMVP-150	150mm	175mm

Accuracy in Parallelisms of Jaw 0.01/100mm

All Steel Hardened & Ground





## MILLING MACHINE VICE WITH SWIVEL BASE CODE NO H- 445



### KEY FEATURES

- ❖ Specially designed for Milling Machine & CNC Machining centre
- ❖ Body made of high quality ductile cast iron to resist deflection or bending.
- ❖ All parts interchangeable & available as spare.
- ❖ Available with swivel base also.

### Dimensions in mm

Model Number	Size	Width of Jaw	Opening of Jaw	Depth of Jaw	Length Overall	Height Overall	Weight Kg
4004	100	100	100	40	320	110	18
6006	150	150	150	50	465	140	38
8008	200	200	200	60	590	165	68
1010	250	250	250	75	725	190	115
1212	300	300	300	75	820	200	185



## TILTING & SWIVELING MACHINE VICE CODE NO H- 447



### KEY FEATURES

- ❖ Specially designed for Milling Machine & CNC Machining centre
- ❖ Body made of high quality ductile cast iron to resist deflection or bending.
- ❖ All parts interchangeable & available as spare.

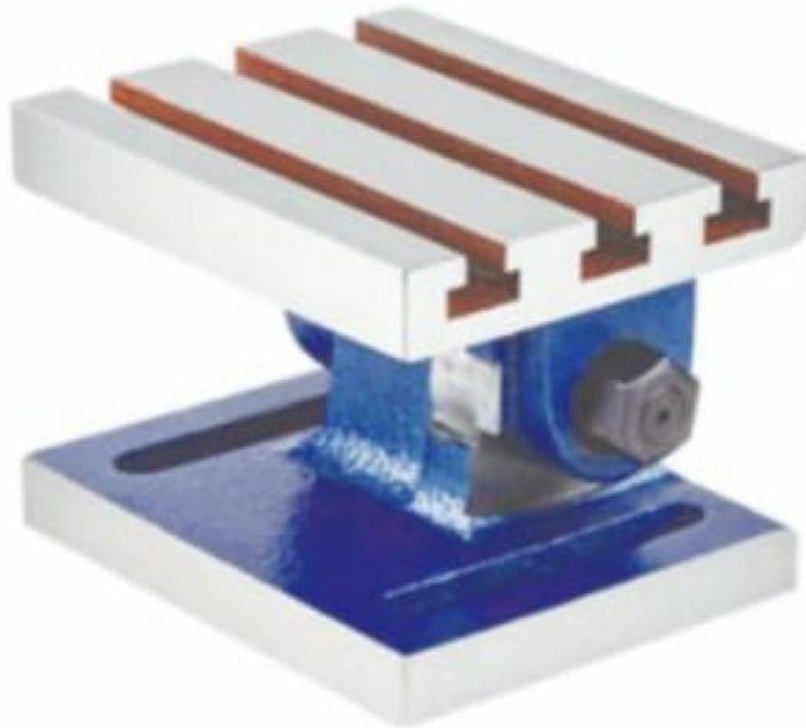
### Dimensions in mm

Model Number	Size	Width of Jaw	Opening of Jaw	Depth of Jaw	Length Overall	Height Overall	Weight Kg
1004	100	100	100	40	340	150	20
1506	150	150	150	50	485	195	42



**HARCO ADJUSTABLE ANGLE PLATE CODE NO. H - 455**

Ideal For :  
Milling Machines  
& Surface Grinders



**Dimensions in mm**

Model Number	Length	Width	Height
HAAP-150	150	125	113mm
HAAP-200	200	150	135mm
HAAP-250	250	200	170mm
HAAP-300	300	250	205mm

Accuracy in Parallelisms of Jaw 0.02/100mm

Closed Grain Cast Iron Body



## HARCO TILTING TABLE CODE NO. H - 465

Ideal For :

Milling Machines

& Surface Grinders



### Dimensions in mm

Model Number	Length	Width
HTT-125	150	100
HTT-175	175	125
HTT-250	250	175
HTT-375	375	250

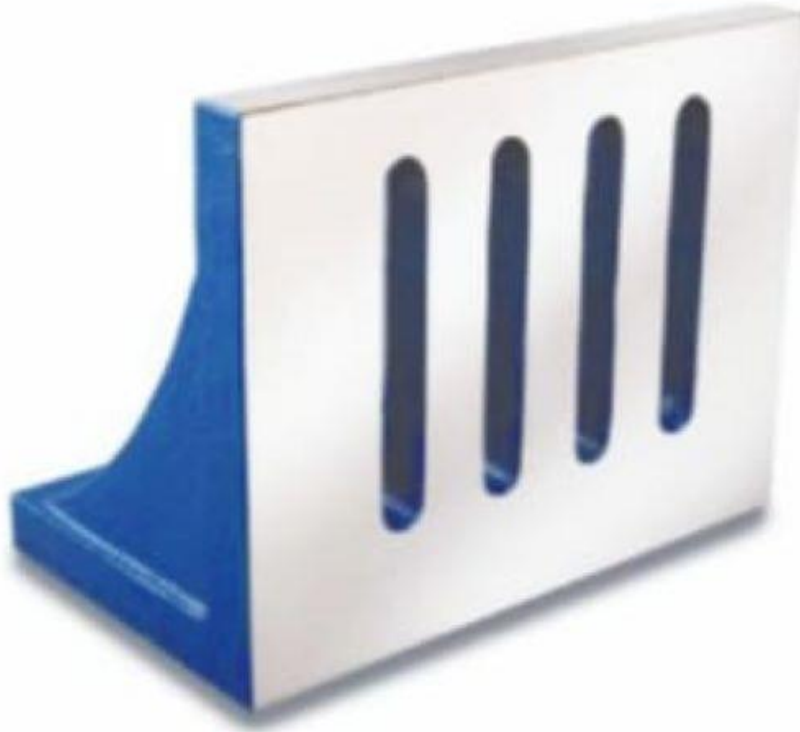
Accuracy in Parallelisms of Jaw 0.02/100mm

Closed Grain Cast Iron Body

Ideal For :

Milling Machines

& Surface Grinders



**Dimensions in mm**

Model Number	Length	Width	Height
HAP-150	150	125	110mm
HAP-200	200	150	125mm
HAP-250	250	200	150mm
HAP-300	300	225	200mm
HAP-350	350	250	225mm
HAP-400	400	300	225mm

Accuracy in Parallelisms of Jaw 0.05/100mm

Closed Grain Cast Iron Body

**HARCO**<sup>®</sup>

**SG IRON MULTIPURPOSE VICE SWIVEL BASE CODE NO H - 485 SIZE 125MM**





**ANIVAL CAST IRON CODE NO - 490**



Model Number	Weight In Kg
A 220	20
A 225	25
A 230	30
A 240	40
A 250	50
A 2100	100



**Dimensions in mm**

**KEY FEATURES**

- ❖ Closed grained Cast iron body.
- ❖ Hardened and knurled steel jaws.
- ❖ Fine acme thread screw.
- ❖ Unbreakable steel nut.
- ❖ High tensile fasteners used.

Model Number	Jaw Width	Jaw Opening	Depth Of Jaw	Over All Length	Over All Height	Weight In Kg
BVH 1065	65	65	45	195	100	3.500
BVH 1080	75	80	47	235	110	4.800
BVH 1090	90	90	60	290	130	6.700
BVH 1105	100	105	65	315	140	9.500
BVH 1120	115	120	70	340	150	10.500
BVH 1130	125	130	80	380	170	14.000
BVH 1160	150	160	85	450	180	17.800
BVH 1210	200	210	100	530	210	30.000
BVH 1280	255	280	130	660	270	53.000
BVH 1305	300	305	130	670	270	55.000





**KEY FEATURES**

- ❖ Closed grained Cast iron body.
- ❖ Hardened and knurled steel jaws.
- ❖ Fine acme thread screw.
- ❖ Unbreakable steel nut.
- ❖ High tensile fasteners used.

**Dimensions in mm**

Model Number	Jaw Width	Jaw Opening	Depth Of Jaw	Over All Length	Over All Height	Weight In Kg
BVL 2090	90	90	60	290	130	5.800
BVL 2105	100	105	65	315	140	6.800
BVL 2120	115	120	70	340	150	8.500
BVL 2130	125	130	80	380	170	10.500
BVL 2160	150	160	85	450	180	14.500
BVL 2210	200	210	100	530	210	25.000
BVL 2280	255	280	130	660	270	26.000
BLV 2305	300	305	130	670	270	35.000



**Dimensions in mm**

**KEY FEATURES**

- ❖ Closed grained Cast iron body.
- ❖ Hardened and knurled steel jaws.
- ❖ Fine acme thread screw.
- ❖ Unbreakable steel nut.
- ❖ High tensile fasteners used.

Model Number	Jaw Width	Jaw Opening	Depth Of Jaw	Over All Length	Over All Height	Weight In Kg
BVDR 3065	65	65	45	195	100	3.500
BVDR 3080	75	80	47	235	110	6.500
BVDR 3090	90	90	60	290	130	9.000
BVDR 3105	100	105	65	315	140	12.500
BVDR 3120	115	120	70	340	150	14.500
BVDR 3130	125	130	80	380	170	19.000
BVDR 3160	150	160	85	450	180	26.000
BVDR 3210	200	210	100	530	210	42.000



**Dimensions in mm**

**KEY FEATURES**

- ❖ Closed grained SG iron body.
- ❖ Hardened and knurled steel jaws.
- ❖ Fine acme thread screw.
- ❖ Unbreakable steel nut.
- ❖ High tensile fasteners used.

Model Number	Jaw Width	Jaw Opening	Depth Of Jaw	Over All Length	Over All Height	Weight In Kg
BVSCR 4080	75	80	47	235	110	6.000
BVSCR 4105	100	105	65	315	140	10.300
BVSCR 4120	115	120	70	340	150	10.800
BVSCR 4130	125	130	80	380	170	14.500
BVSCR 4160	150	160	85	450	180	18.500
BVSCR 4210	200	210	100	530	210	29.500



Dimensions in mm

Model Number	Size	Weight In Kg
PV 550	50	7.500
PV 575	75	10.000
PV 5100	100	14.000

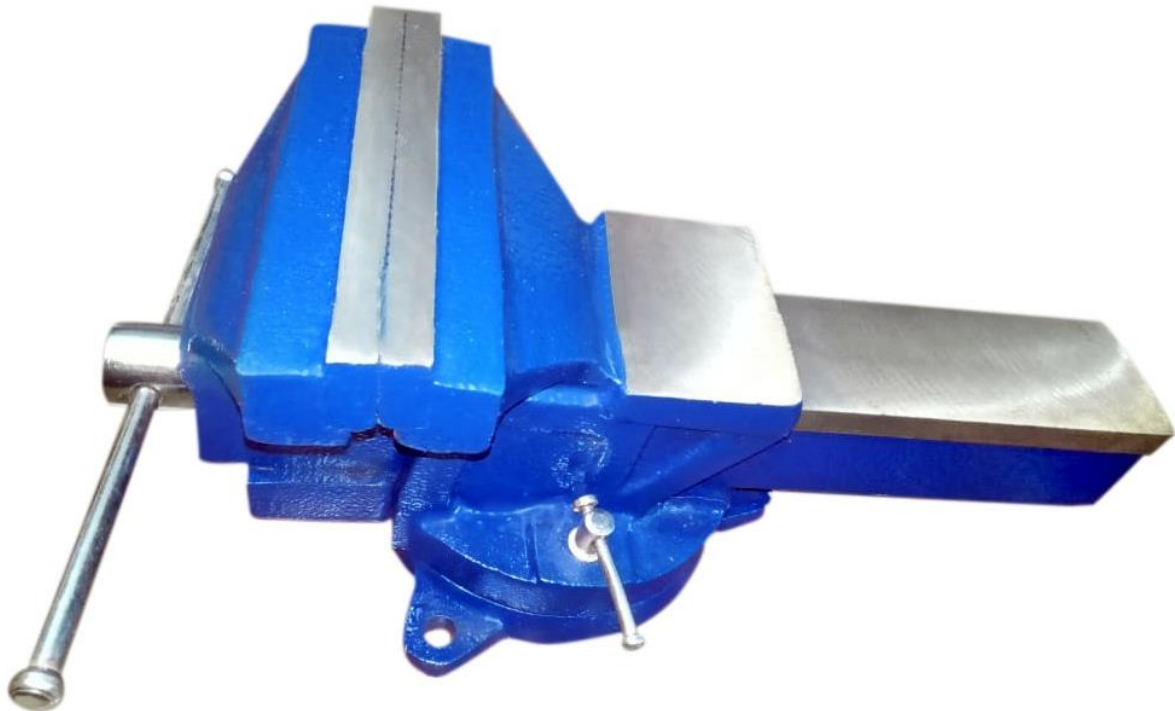


**KEY FEATURES**

- ❖ Closed grained SG iron body.
- ❖ Hardened and knurled steel jaws.
- ❖ Fine acme thread screw.
- ❖ Unbreakable steel nut.
- ❖ High tensile fasteners used.

**Dimensions in mm**

Model Number	Jaw Width	Jaw Opening	Depth Of Jaw	Over All Length	Over All Height	Weight In Kg
BVSFB 6080	75	80	47	235	110	3.300
BVSFB 6105	100	105	65	315	140	5.000
BVSFB 6130	125	130	80	380	170	6.500
BVSFB 6160	150	160	85	450	180	9.500
BVSFB 6210	200	210	100	530	210	12.500



**KEY FEATURES**

- ❖ Closed grained SG iron body.
- ❖ Hardened and knurled steel jaws.
- ❖ Fine acme thread screw.
- ❖ Unbreakable steel nut.
- ❖ High tensile fasteners used.

**Dimensions in mm**

Model Number	Jaw Width	Jaw Opening	Depth Of Jaw	Over All Length	Over All Height	Weight In Kg
BVSSB 7080	75	80	47	235	110	3.700
BVSSB 7105	100	105	65	315	140	5.500
BVSSB 7130	125	130	80	380	170	7.500
BVSSB 7160	150	160	85	450	180	10.000
BVSSB 7210	200	210	100	530	210	13.500



**KEY FEATURES**

- ❖ Closed grained cast iron body.
- ❖ Hardened and knurled steel jaws.
- ❖ Fine acme thread screw.
- ❖ Unbreakable steel nut.
- ❖ High tensile fasteners used.

**Dimensions in mm**

Model Number	Jaw Width	Jaw Opening	Depth Of Jaw	Over All Length	Over All Height	Weight In Kg
BVCFB 8080	75	80	47	235	110	3.300
BVCFB 8105	100	105	65	315	140	4.500
BVCFB 8130	125	130	80	380	170	6.300
BVCFB 8160	150	160	85	450	180	9.300
BVCFB 8210	200	210	100	530	210	12.500



**KEY FEATURES**

- ❖ Closed grained cast iron body.
- ❖ Hardened and knurled steel jaws.
- ❖ Fine acme thread screw.
- ❖ Unbreakable steel nut.
- ❖ High tensile fasteners used.

**Dimensions in mm**

Model Number	Jaw Width	Jaw Opening	Depth Of Jaw	Over All Length	Over All Height	Weight In Kg
BVCSB 9080	75	80	47	235	110	3.700
BVCSB 9105	100	105	65	315	140	4.900
BVCSB 9130	125	130	80	380	170	7.200
BVCSB 9160	150	160	85	450	180	10.000
BVCSB 9210	200	210	100	530	210	13.500
BVCSB 9280	255	280	130	660	270	28.500
BVCSB 9330	305	300	130	670	270	38.000